

**NEW**



# Polarized & Locking Housing MHLH Series

Designed for use on Membrane  
Switches, Flexible Circuits, Jumper  
Cables, Sensors, Textile Ribbons etc

Mates with Industry Standard  
0.635mm Walled Pin Headers

Suitable for use with Female Contacts

2.54mm Pitch

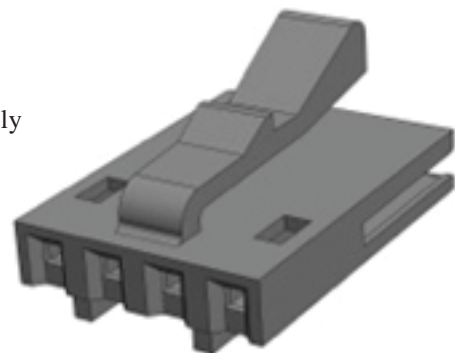
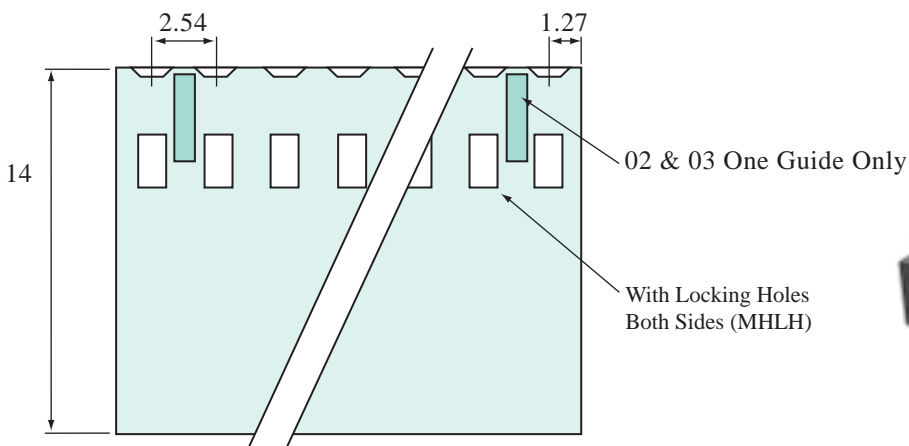
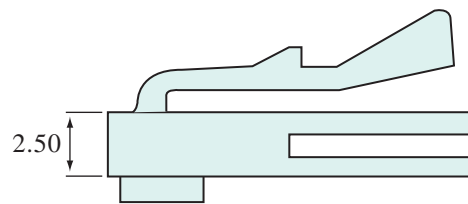
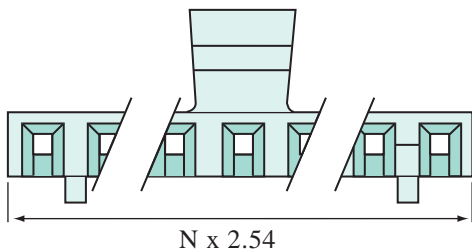
UL 94V-O Classified

Thermoplastic with Glass Fibre

Contact your Local Office for Application/  
Crimping Equipment

MHLH version allows the contacts to be  
inserted either Up or Down

RoHS Compliant



Unit : mm

**MHLH**  
Series

— **XX**  
No of Ways (2-25)

**MEMCON (Asia) Limited**  
Level 7 Parkview Centre  
7 Lau Li Street Causeway Bay Hong Kong  
T +852 3741 1411 F +852 3747 8980  
www.memcon.asia sales@memcon.asia

**MEMCON Limited**  
Compass House Vision Park Chivers Way HISTON  
Cambridge CB24 9AD United Kingdom  
T +44 1223 257724 F +44 1223 257800  
www.memcon.eu sales@memcon.eu  
MEMCON® is a registered trade mark of Memcon Limited

**MEMCON North America**  
3786 Stadium Drive Bridgman  
Michigan 49106 USA  
T +1 269 466 5632 F +1 269 466 6034  
www.memcon.net sales@memcon.net